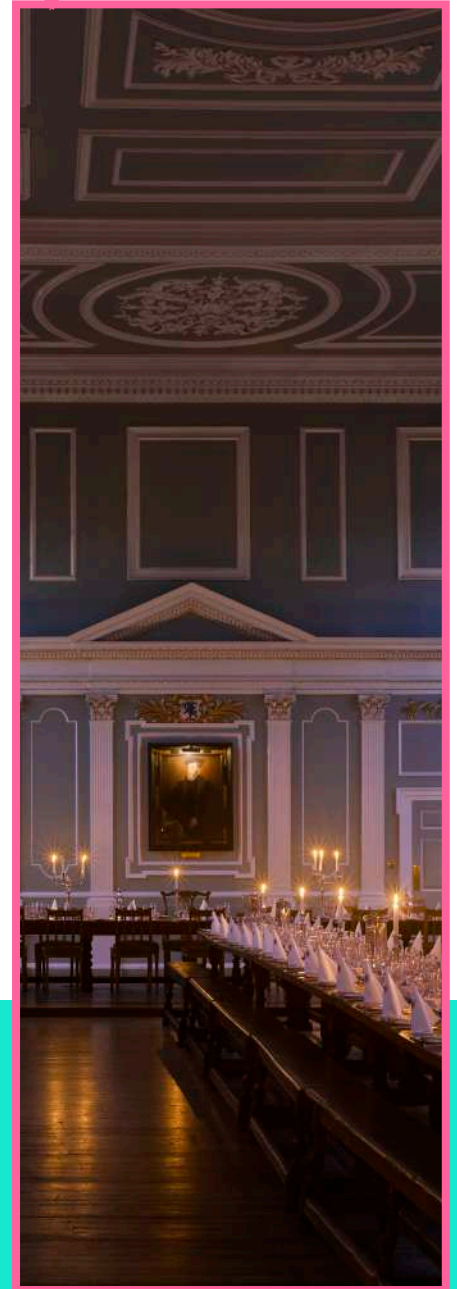
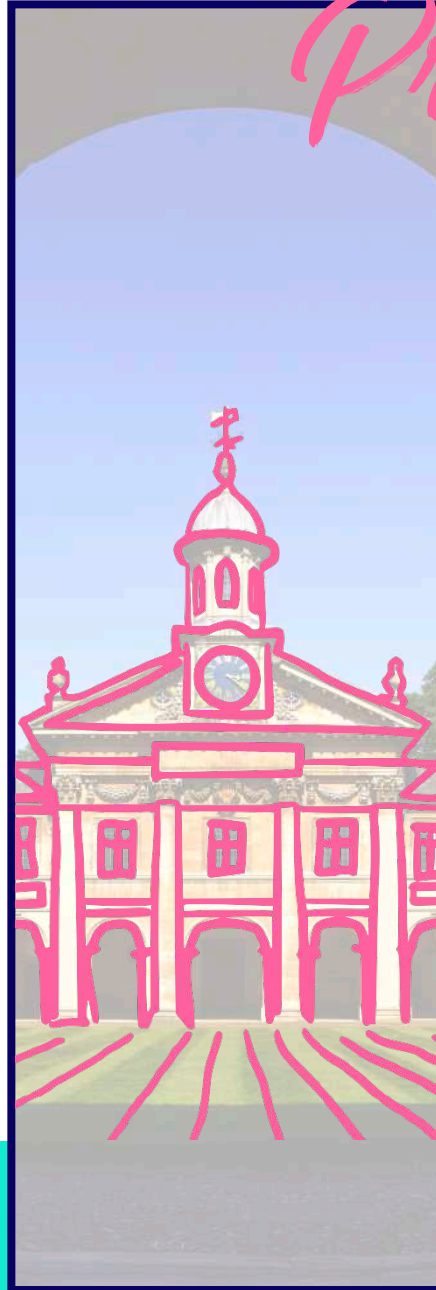
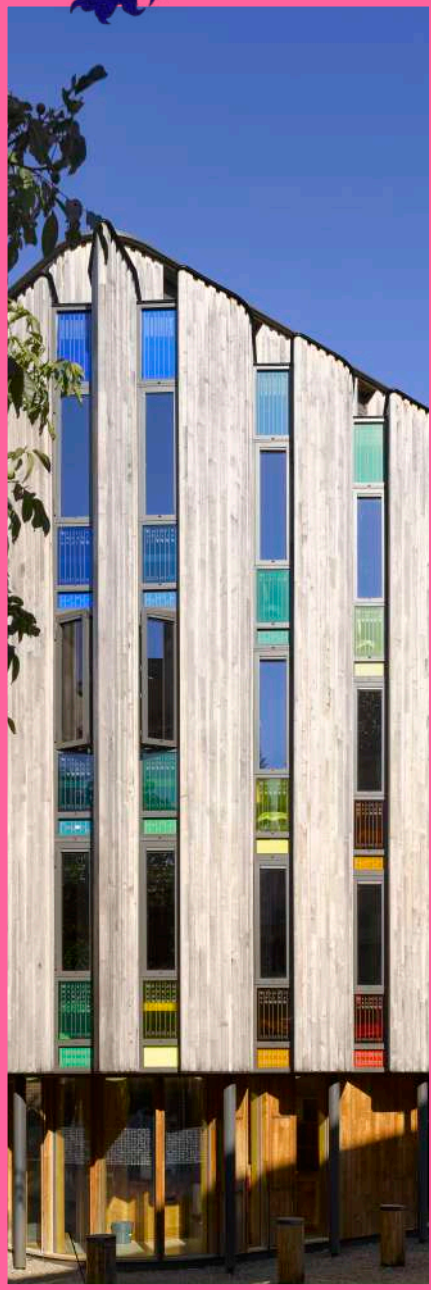




EMMANUEL COLLEGE, UNIVERSITY OF CAMBRIDGE

Emma:

*the Alternative
Prospectus*



**CREATED BY
CURRENT STUDENTS
2021**



**Emmanuel College
Students' Union**

 ecsucambridge.org.uk

 [ecsucambridge on Instagram](#)

contents

ABOUT EMMA	3
FACILITIES	4
ACCOMMODATION	6
FOOD	10
WELFARE	11
FRESHERS' WEEK	12
CLUBS AND SOCIETIES	13



SOCIAL LIFE	15
CAMPAIGNS & DIVERSITY	17
ADMISSIONS	18
FINANCE	20
A DAY IN THE LIFE	21
AND FINALLY...	23



Emmanuel College is one of 31 Colleges at the University of Cambridge.

Each college consists of multiple accommodation buildings where the students live, a Hall where the students eat, a library and many other important facilities.

Essentially, colleges become a home away from home while students are at University.

In particular, Emmanuel College is famous for its student run bar, outdoor swimming pool, its many ducks and its expansive green field (which you're actually allowed to walk on and becomes a great space to relax and eat on in the summer).

Emma has approximately 460 undergraduate students with around 145 in each year. This is a medium-large sized college in Cambridge. It is the perfect size to ensure that students do not feel claustrophobic, but there are still plenty of inter-year friendships.



Emma is located in the centre of Cambridge. There is a large shopping centre opposite the college, as well as plenty of restaurants. We are also only a 5 minute walk away from two lecture sites. Really importantly, there is a Sainsbury's Local just a two minute walk away which is perfect for picking up anything you need for dinner and there is a gym/pool located very close by. The college itself is a beautiful space with a mixture of new and old architecture. However, it never feels packed with tourists and so is a relaxed and calm atmosphere to live and work in.

about
about
about
about

Emma

JCR

A great space to chill out in with friends, this room in

our lovely Queen's Building has plenty of comfy chairs, two TVs, and video games. Student union meetings are also usually held here!

Bar

Emma is a college well-known for its lively social spaces.

There are lots of fun entertainment events over the year, including Jazz Nights and Bar Extensions. The old Emma Bar is currently being rebuilt to become a new Social Hub which will be complete in 2022 and soon become home to lots of new and exciting entertainment for students!



*Emma Bar during
the June Event
2020 launch*

Sports

Emma has its own sports ground only a short cycle away from the college. Located here are netball/ tennis courts and pitches for rugby, football and hockey. We also have our own Boathouse located on the river which provides a great opportunity to get involved with rowing whether you're a complete novice or a seasoned pro. Within College, there are two table tennis tables, in the summer, tennis courts on the Paddock and a college gym. Emma is also famous for its outdoor swimming pool (image below).

Music Practice Rooms

There are 3 music practice rooms in college. Each houses a piano, and you can sign up to use them for free.



College pool

facilities

Hall Cambridge Colleges are neither catered nor non-catered. There is a canteen which we call Hall where you can buy food. It is open every day for breakfast, lunch and dinner. You get charged for the food you have bought at the end of each term on your college bill.

ECSU shop

We have a student run tuck shop which sells pick and mix, fizzy drinks and some basic stationery.

Porters' Lodge

Porters are staff here to help college run smoothly. They're all lovely and great for a chat and a cup of tea if you're feeling homesick or stressed.

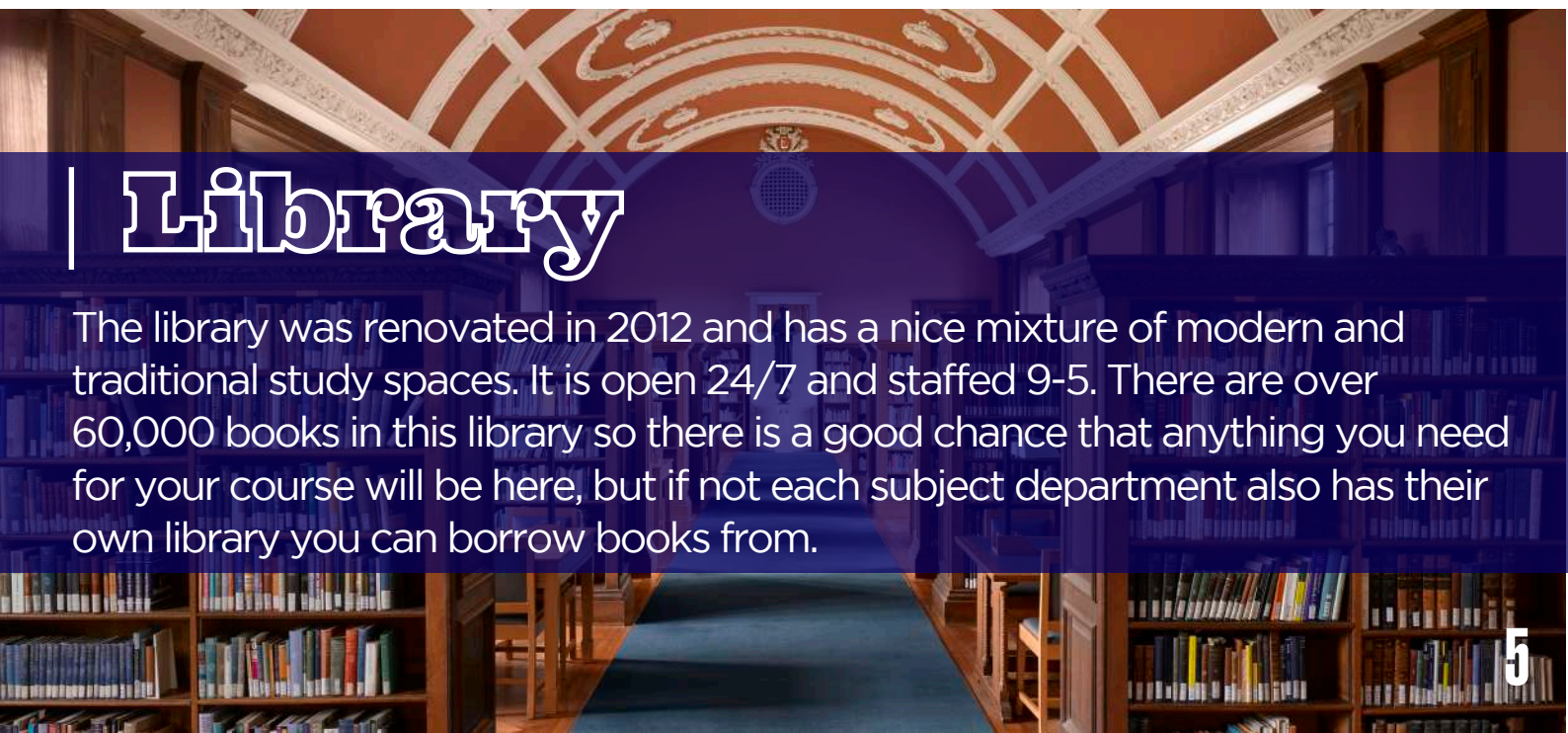


Laundry

Emma is the only College in Cambridge to have a free laundry service! You simply drop off your washing once a week and come back to pick it up in a couple of days.

Library

The library was renovated in 2012 and has a nice mixture of modern and traditional study spaces. It is open 24/7 and staffed 9-5. There are over 60,000 books in this library so there is a good chance that anything you need for your course will be here, but if not each subject department also has their own library you can borrow books from.



accommodation

Emma offers you accommodation for the entirety of your course - this means you never have to deal with private landlords. Instead, you pay your rent directly to the college and any maintenance problems can be quickly solved by the College team. This also means you will always live nearby friends and close to the city centre. Plus, you will be given a bedder (a cleaner) who empties your bins and hovers your room once a week. Finally, rather than paying rent for the entire year, you will only be required to pay for 3x 10 Weeks for each year. This works out far cheaper. All rooms have a bed, desk, lamp, wardrobe and fridge.

Rooms are divided into 8 grades, grade 1 being the cheapest and 8 the most expensive. This is based on proximity to college, size, toilet facilities and cooking facilities. You get to decide which grade of room you would like.

1st Year

Anyone who chooses to can live within the college site. There are a variety of accommodation locations, including Old South, New South, North Court, Warkworth and Park Terrace.

Old South Court

Grades 3-4

Is located close to the bar and to the library. Bathrooms are shared between around 5 students. Décor

is mid-century modern (you'll grow to love it) and there are limited cooking facilities; however, you do have access to a microwave/combi oven and all rooms have a sink inside. Old South is known for being really sociable and a fun place to live.



Old South Exterior

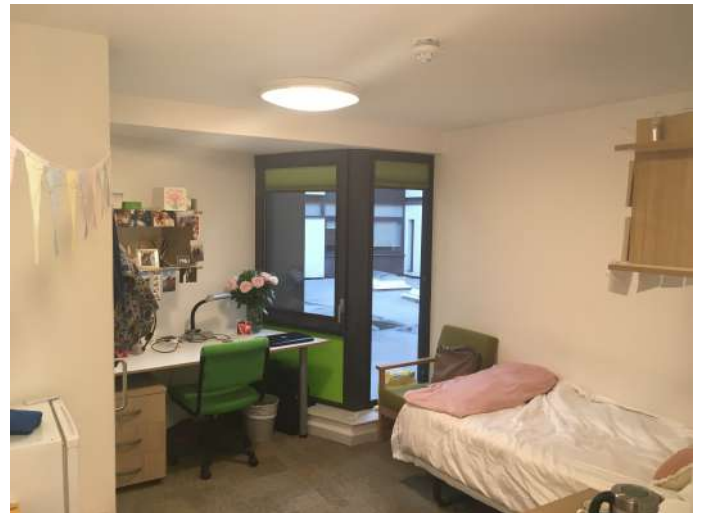


A typical Old South room: undecorated and decorated!

New South Court

Grade 6

Located right next to Old South, this is quite a modern building. Every room has an ensuite and has some of the best cooking facilities in college. Consisting of 3 floors of 12 rooms, each floor has a large kitchen including a microwave and hobs.



A New South room

North Court

Grades 2-6

Only a 3 minute walk from South Court, North Court is the only first year accommodation which is shared with other year groups. This makes North Court a really friendly community. Kitchens have a variety of facilities- most including hobs. It is known for having a more traditional 'Cambridge' look.



A North Court room (Grade 4)

2nd & 3rd Year

Most Second Year students live in College owned accommodation just outside of the College. This allows students to experience what it's like living in a house with slightly more independence while still having the college as your landlord. This is a great chance to live with a close group of friends. The furthest away houses are just a 10 minute walk to College so even when living in these houses students remain close to college life.



North Court exterior

Third Year is the time that students have the greatest choice over their accommodation as they have first pick of all rooms. There are a huge variety in the rooms available, from rooms with sitting rooms/ mini kitchens to smaller, cosy attic rooms and rooms with amazing views across the paddock.



Warkworth St.



Park Terrace room (Grade 4)



*Warkworth St. room
(Grade 4)*



New Court exterior

Typically Grade 8: rooms are ensuite and even have kitchen facilities!



View from Park Terrace

Looking out to Parker's Piece



Old Court exterior

These come in 'sets' - two bedrooms and a huge living room typically shared by friends!

Emma's Dining Hall is an iconic duck egg blue colour. Food is available for breakfast, lunch and dinner at a subsidised price. Sunday is a particularly busy day in Hall as students flock to the dining hall for Brunch with an average price of just £3.

There is a huge variety of food to choose from. There are vegetarian and vegan options available every day. In addition to hot mains there is a salad bar, soup at lunchtime, sandwiches, fruit and desserts. An average lunch/ dinner costs £3-5.

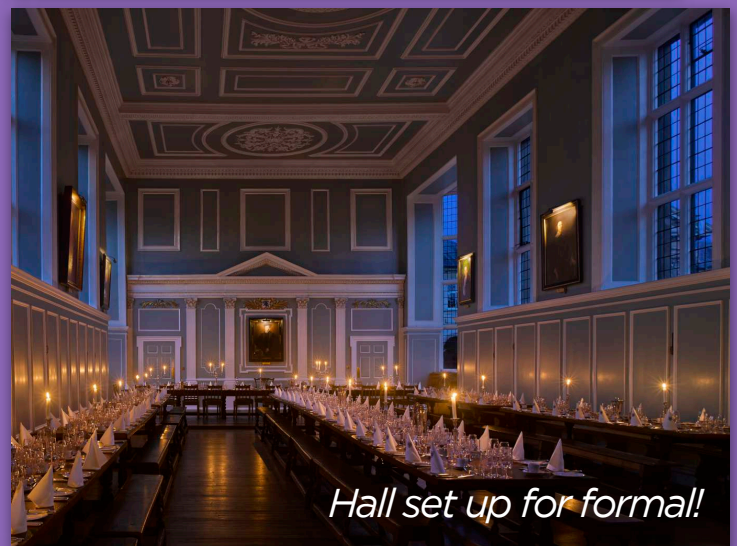
Eating in hall is a really sociable part of college life. It's a great chance to catch up with friends after a morning of lectures or a day in the library. In the summer, Emma students often take their food outside to eat alongside the famous Emma ducks.



Formal hall



Evening informal hall



Hall set up for formal!

Because most students eat in hall there are limited cooking facilities available for self-catering. Barely any student accommodation is equipped with an oven and only some come with hobs. Over the years, students have become very creative and you would be surprised how much you can make in a microwave or combination oven! You are welcome to bring your own toasters, kettles or rice cookers. In addition, there are plenty of restaurants located just across the road from Emma, such as Nandos, Wagamamas and Wetherspoons.



welfare

Moving away from home for the first time is a big step and everyone reacts differently to it. It is not uncommon for students to feel homesick or stressed, especially in their first term. At Emma there are clear resources and processes in place to make sure everyone can get the support that they need.



As a starting point we have two student Welfare Officers who are available for a cup of tea and a first point of contact if you're not sure what resources you have available to you. They can help point you in the right direction. They also organise lots of lovely stress-relieving events throughout the year such as tea and cake afternoons, yoga, pick and mix goody bags, massages, pets therapy and a bouncy castle in Easter term.



There are also student LGBT+, Racial Equalities, Women & Non-Binary, Disabilities & Mental Health, Access & Class Act, and International Officers, if you have a more specific welfare issue/query.

Each student is also assigned a tutor. This is a member of academic staff at Emmanuel who you should see at least once a term. They are another great starting point if you are having any problems and are not sure who can help, or just feel you need to talk them through with someone. Emmanuel also has a college counsellor, newly-appointed advisors to women students and BME students, and plenty of advice on where you can access further welfare support from the University.

freshers' week



Each year, a group of students organise the following year's Freshers' week. This week aims to help new students settle in and also meet as many other new Emma students as possible. Activities include punting, tea and cake, film nights, clubbing, bar crawls and dinners.

Another great aspect of Emma is our college family system. Every fresher is assigned to a college family, they will have fellow fresher siblings as well as two 3rd year parents. Freshers will attend events as a college family to give them a chance to spend time with a smaller group of students.

You will also be assigned some second year students as subject parents. These students can give advice on subject specific exams, lectures and reading lists.

We also host an international Freshers' week for international students a week before everyone arrives to help those students settle in and get organised with things like bank accounts and visa checks.



clubs & societies



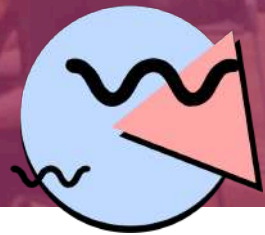
When arriving at University, there are lots of opportunities to get involved with new societies!

Whether you have played an instrument for years and now you want to join an orchestra or you would like to get involved in an entirely new sport, there are a huge range of societies at a variety of skill-set levels. While there are plenty of University-wide societies there are also a huge range of Emmanuel Societies. College Societies and teams are especially fun as they are a great chance to get to know the students you live with, plus you rarely need any experience to join. Most of these societies are student run and really casual so you can decide how much of a commitment you want them to be.



Just some of the societies at Emma:

- Athletics
- Badminton
- Basketball
- Boat Club (Rowing)
- Chapel Choir
- Christian Union
- Cricket
- Art/Photography Society
- Circus Society
- Ski Society
- Music Society
- Netball (ladies and mixed)
- Green Ducks (Environmental group)
- Hockey
- Skateboarding Society
- Football (men's' and women's')
- Rugby (men's' and women's')
- Lacrosse
- Drama Society (organises the Freshers' play)
- Squash
- Water Polo
- Tennis
- Mountaineering
- Medical and Veterinary Society
- May Ball Committee
- Emmanuel College Students' Union (ECSU)
- Quizzing society (University Challenge team!)
- CinEmma (film society)
- Engineering Society

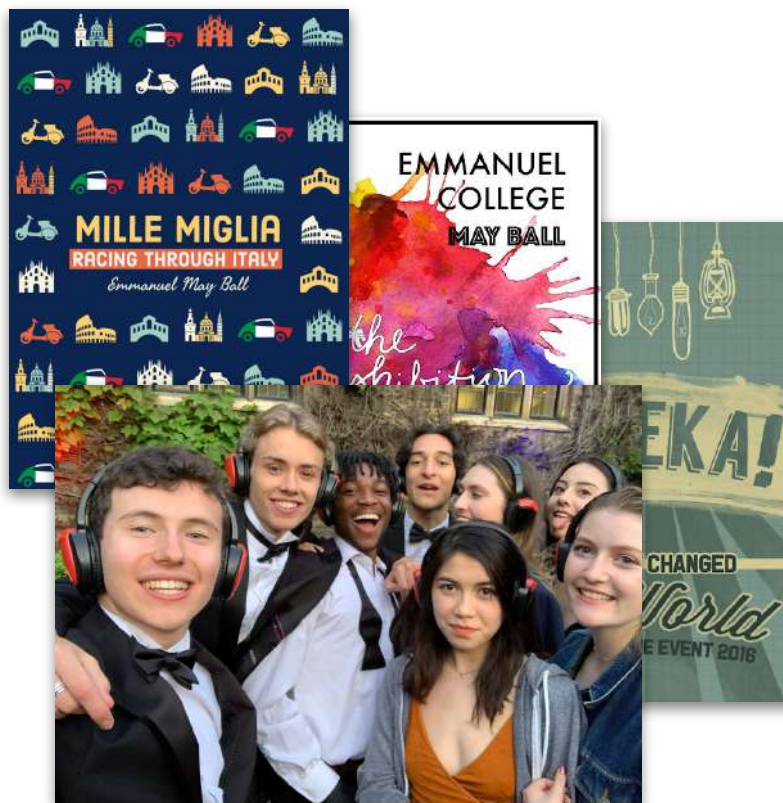


social life

Emma is a really sociable college and there are lots of things to get involved in - whatever floats your boat.

| May Ball

Each year Emma hosts a summer Ball (called a May Ball or a June event). These happen after everyone's exams are over and so are a great way to celebrate the year. In the past we have had themes like Mille Miglia (road trip around Italy), 60s, Exhibition (art theme) and Eureka!



| Emma Bar & Ents!

It's going through a bit of a transformation, but our old Emma Bar was a well-loved destination for a quiet drink/chat with friends, game of pool, table football or getting ready for a big night out.

From 2022, we will have a brand new Social Hub, where our iconic entertainments (ents) will be held! Ents usually involve a DJ set or performance by an upcoming student music act; in the past we've had Jazz and Cocktail nights and the Uni Hip Hop Society have come to perform.

| Bar Extensions

These were held in the old bar where it was kept open a few extra hours. They were basically themed parties, where students dress up in fancy dress and enjoy a night of student DJs with the entire Emma student body. We're looking forward to them in their new home!



| ...and more!



campaigns & diversity



At Emma we want all students to feel welcome and at home regardless of their background. One of the most amazing parts of University is meeting people from a huge range of backgrounds, but in order for this to continue we are constantly looking for ways to improve students' experiences for everyone. Our Students' Union therefore has representatives for each of the following groups.

LGBT+

There is a great LGBT+ community at Emma. The LGBT+ officer organises regular social events including leading a group of Emma students to the weekly LGBT club night. They have also overseen having the Pride flag flown every year over the college for LGBT History Month. They are a great person to speak to if you are having any welfare concerns related to your sexuality or gender identity.

Ethnic Minorities

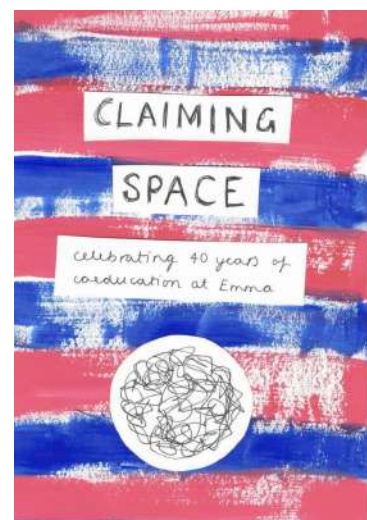
As well as voicing the concerns of Ethnic Minority students, our Racial Equalities Officer organises regular social events to empower and bring Ethnic Minority students together. This officer also helps maintain links between Emma and University wide Ethnic Minority campaigns such as FLY (a group for women and non-binary people of colour at Cambridge).

Disabilities and Mental Health (DMH)

Our DMH officer campaigns for better access around college, hosts tea and cakes for self-identifying disabled students, and helps students with the process of filling in exam-adjustment forms.

Women and Non-Binary Students

Our WNB Officer facilitates the running of Emma's FemSoc, a space for self-identifying women and non-binary students to socialise, campaign for equality and share experiences. In the past, they have also organised a publication to celebrate 40 years since women were admitted to Emmanuel.



Access and Class Act

The two Access and Class Act Officers work to address access issues within college and support outreach schemes, such as the annual Access Bus or the new BME Shadowing Scheme which was launched in 2020. They also organise the Student Union Shadowing Scheme within college each year, and engage with the university-wide Class Act campaign.

admissions



The following applies to all Cambridge colleges. We know the process of application can seem daunting, but if the previous pages have made you feel that Emma could be the place for you we would really encourage you to apply. You have nothing to lose!



Step 1

Fill in your UCAS form and include Cambridge as one of your options. If you don't want to select a college you can make an open application and you will be randomly assigned one (this won't help or hinder your application in any way). The UCAS form has to be entered a little earlier if you are applying to Oxbridge (15 October) so make sure you note down this date!

Pre-interview assessments are in place for some subjects - make sure you register before the deadlines which may differ depending on whether you are applying for medicine or have access requirements. Find out more: undergraduate.study.cam.ac.uk/applying/admissions-assessments/pre-interview.

Step 2

Once Cambridge has received your application they will ask you to fill out an Additional Application Questionnaire. This may ask you to provide some further information such as what parts of the course you have studied, class sizes, and – if you want – there is an opportunity to say a few things more specific to the Cambridge course.

Step 3

The next step varies based on college and course you are applying for. Keep an eye on your email account for messages from the college you applied to. You may be asked to submit essays or complete a subject specific test (either pre-interview or at-interview). The university website can provide further information for each course.

Step 4

The College will then assess your application based on a variety of factors, including your personal statement, Additional Application Questionnaire, any supplementary evidence you were asked to provide (e.g. tests or essays), and the teacher reference. They will then decide who to invite to interview, with the majority of applicants being interviewed.

Step 5

You will likely hear a million myths about the Cambridge interview process... take no notice! Interviewers want you to do well, they're not trying to trip you up or catch you out - they want to see students they think will thrive on the Cambridge course. They will want to understand how you think, which often means just applying what you already know to new situations. There will likely be some questions you can't answer; just make sure you think out loud so the interviewers can support you. Think of this more as an academic discussion than an interview and try to enjoy it if possible. Finally, remember the interview is only one of many factors which are taken into consideration when your application is reviewed.

Please do apply and don't let the application process put you off – it has a few more steps, but that's also an opportunity for the University to get to know you & understand your thinking better!





Do not let money put you off university! University is a huge financial commitment and you should take that seriously, but gone are the days when only rich people can go to University.

From 2021, if your household income is below a certain level you may qualify for the annual Cambridge bursary, which you do not have to pay back. More info can be found at cambridgestudents.cam.ac.uk/cambridgebursary/eligibility-and-further-information. Additionally, if you are a care leaver or estranged student, you may be eligible for an enhanced bursary; and if you have been eligible for Free School Meals, you may qualify for the 'Educational Premium'.

"The Cambridge Bursary made a huge difference to my time at University; firstly, it made sure I had the same experiences as my friends, and wasn't worrying about money. It also reassured me that the University was committed to supporting students like me, and meant I felt able to discuss finances and my concerns with my tutor when I needed additional support."

Anonymous student

Emma is keen to attract the brightest students, not the richest. You will have 2 main costs while at University: tuition fees which you may use a government loan to pay for; and living costs, which may be partially or totally covered by a maintenance loan if you choose to take one out.

In addition to the Cambridge Bursary (for students at any college), Emmanuel is able to offer help to its students in the form of:

- **Scholarships:** for academic achievement
- **Travel Grants:** for trips abroad associated with study (*usually subject specific*)
- **Sports Grants:** to help fund playing high level sport

If you are ever in financial need, your tutor wants to know - there are many ways in which the college can help - they just need to be told!

You can find lots more information about loans and financing on the government website (gov.uk/student-finance) and the Cambridge site (undergraduate.study.cam.ac.uk/fees-and-finance).

a day in the life... of an Arts student

Name: Olivia Malmose O'Connor

Year: 3rd Year

Subject: Human Social and Political Sciences (Politics and Social Anthropology)

From: Chelmsford, Essex

Reasons for Choosing Emma:

lovely grounds, the perfect size and in a great central location.



8:30: Roll out of bed, try to eat some cereal and then run out of the door for my first lecture (usually a 10 minute walk, or max. a 10 min cycle away)

9:00: First Lecture, the Anthropology of Cities, only around 15 of us in this lecture. I'm probably tired and phasing in and out of what the lecturer is saying.

10:00: pop into the Sociology and Politics library to pick up some books for my next essay. Start reading and making notes, the question is for my British Politics Paper: Did New Labour represent a coherent ideology, or just an electoral strategy?

10:55: Cycle over to my next lecture, just a 5 minute cycle away. Lecture about gender and politics, we have been looking at how to tackle under-representation, super interesting!

12:15: Cycle back to college and grab some food in Hall. Catch up with some friends.

13:00: Head back to my room for a quick nap.... Woops.

13:40: Read through my last essay then cycle over to the Anthropology department for a supervision. Everything makes a lot more sense after that supervision and had an interesting conversation about whether Colonialism is still impacting modern foreign relations.

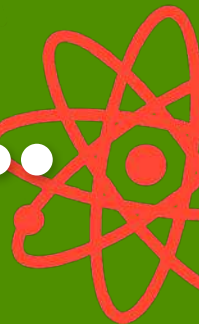
15:05: Head back to the College Library and try to get some more reading done for my essay.

18:15: Finally, time for dinner, head over to Hall with a group of friends and catch up. Great dinner, fajitas and sticky toffee pudding.

19:00: May Ball (Summer Ball) Committee Meeting, discussing the theme tonight, super exciting!

20:00: Get some proper reading done and then pop over to the college bar for a couple of drinks. In bed by Midnight.

a day in the life... of an Science student



Name: Melissa Haynes Agoro

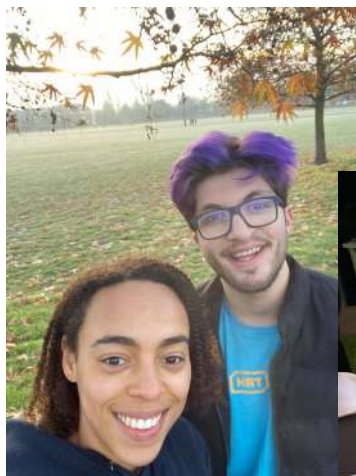
Year: 2nd

Subject: Natural Sciences

From: South East London

Reasons for choosing Emma:

Really pretty college, the friendliest people and ducks, and a perfect central location in Cambridge - especially for a NatSci with Saturday 9ams.



6:30: Crawl out of bed for a morning rowing outing - luckily just a 5 min cycle to the boathouse.

8:25: Head back to college for a quick shower and to grab something for breakfast before speed walking across Parker's piece to just make it for the start of my 9am chemistry lecture.

10:00: Chemistry lecture has just finished and I'm probably craving some coffee so I grab a mug from the chemistry cafe (only 50p!) before going to the department library to work on some supervision questions.

12:00: I head back downstairs for my second chemistry lecture of the day. At this point I'm getting hungry so will quickly check the hall menu - really hoping for curly fries.

12:50: Some of us will walk back to college and get lunch in hall.

13:30: After a quick lunch I'll walk back to the chemistry department with a few friends who also have labs. Today is an organic lab where we're working in pairs which is fun and helps the time go faster.

16:45: After finishing my lab I head back to my room in college. It's been quite a busy day so I take a break and have a giant cup of tea.

17:30: I decide to do a couple of hours of reading on feminist philosophy of science, which is definitely my favourite topic so far, for my next HPS (History and Philosophy of Science) essay before dinner.

19:30: I spend way too long cooking a curry for dinner because it is the perfect way to procrastinate and chat with friends on my staircase. After eating, I head over to a friend's room to chill and have a few drinks - I'm exhausted so just stay for pre's and head to bed just after midnight.



and finally...

We hope you have found this document useful and it has given you a better idea of what life at Emmanuel College is actually like for the students who live here.

However, it is very difficult to sum up the variety of student experiences in a single document so please use the following links to find further information....

Our website (Emmanuel College Students' Union)

ecsus.org.uk

Emmanuel College website:

emma.cam.ac.uk/admissions

University of Cambridge website:

cam.ac.uk

Cambridge Students' Union:

cambridgesu.co.uk

AND www.applytocambridge.com

Interview reassurance:

insideuni.org/cambridge/interviews

If you have any questions, feel free to contact the College admissions office at admissions@emma.cam.ac.uk. Our Schools Liaison Officer can be contacted at slo@emma.cam.ac.uk. Our student Access & Class Act officers may also be contacted about student life at access@ecsus.org.uk.



Emmanuel College
Students' Union

Words by Olivia Malmose O'Connor

Edited by Matilda Schwefel, Harriet Hards, and Jerry Chen

Produced and designed by Jerry Chen

Information provided in this Alternative Prospectus was accurate to the best of our knowledge at the time of publishing (2021). Emmanuel is constantly changing, developing and improving so please refer to emma.cam.ac.uk for the most up to date information.